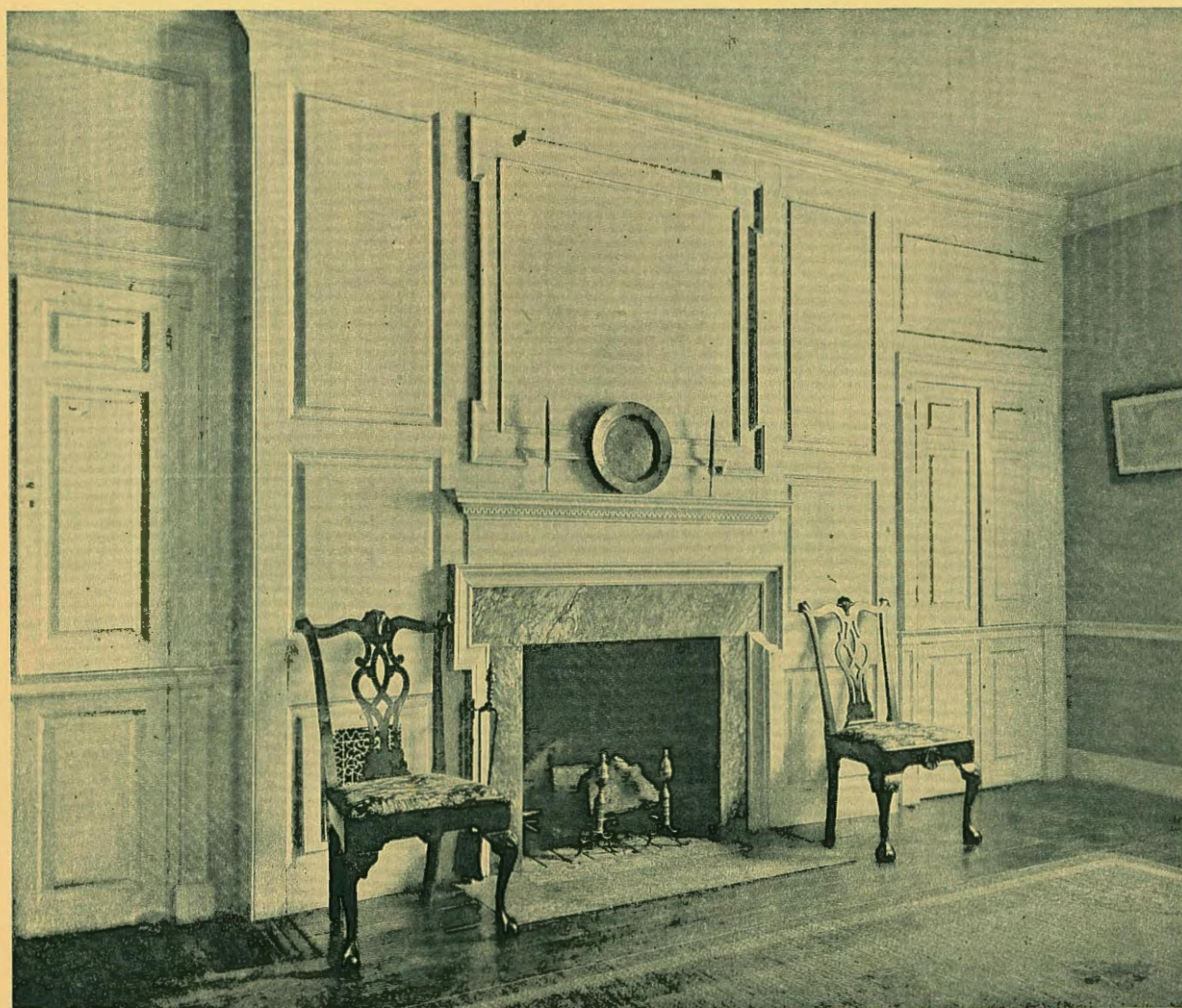


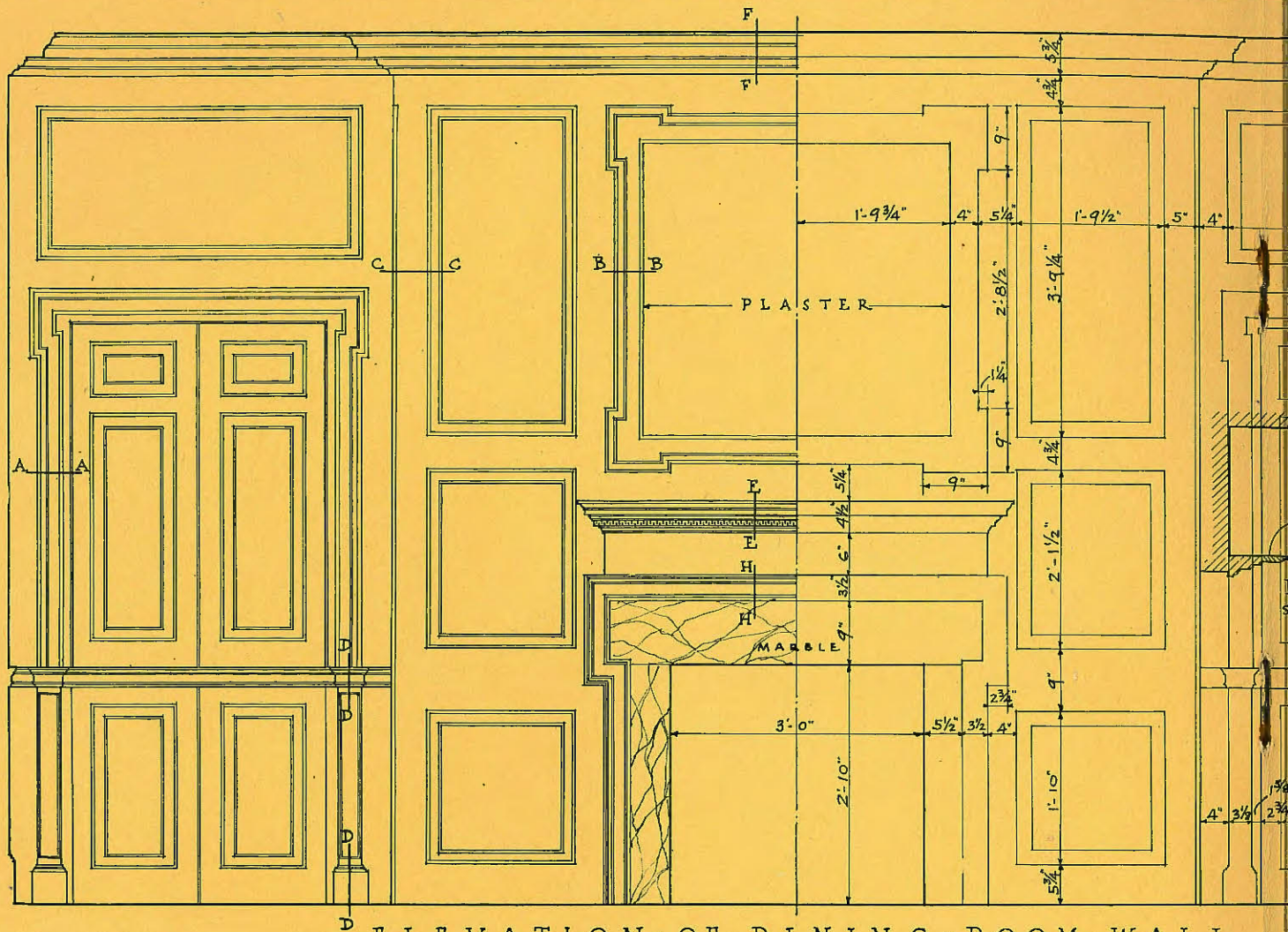
The WHITE PINE SERIES of EARLY AMERICAN DOCUMENTS

With MEASURED DRAWINGS from
The George F. Lindsay Collection

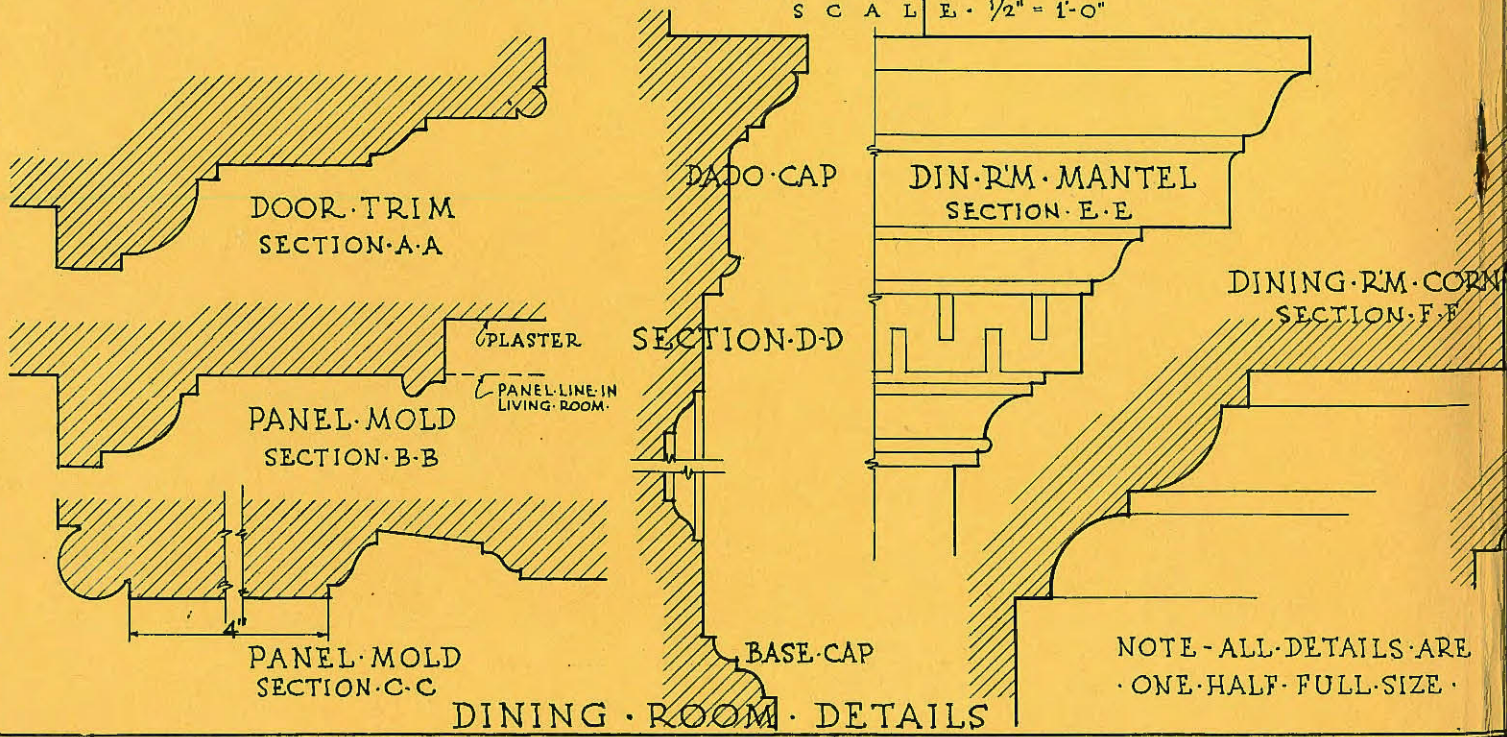
The Living Room and the Dining Room of THE KENSEY JOHNS HOUSE NEW CASTLE, DELAWARE



PANELLING AND MANTEL IN THE DINING ROOM

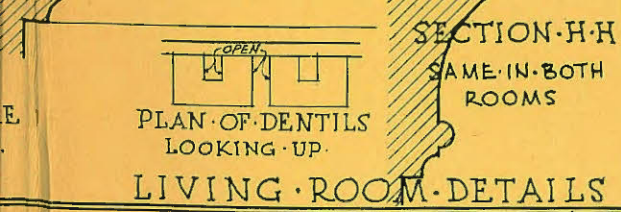
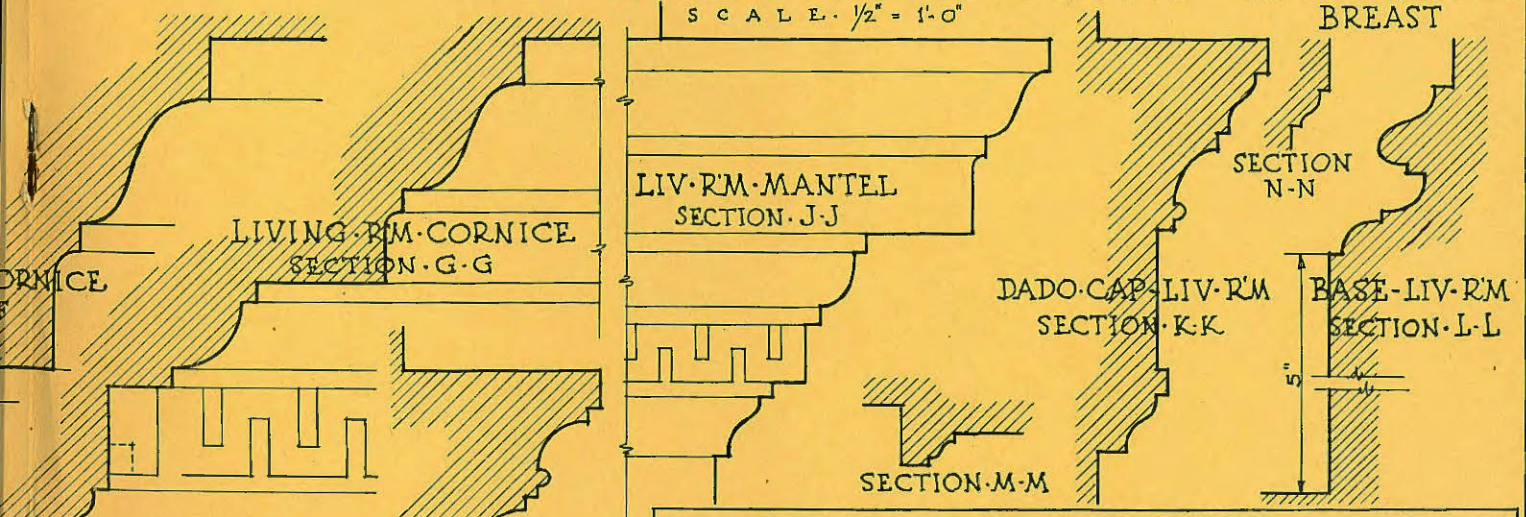
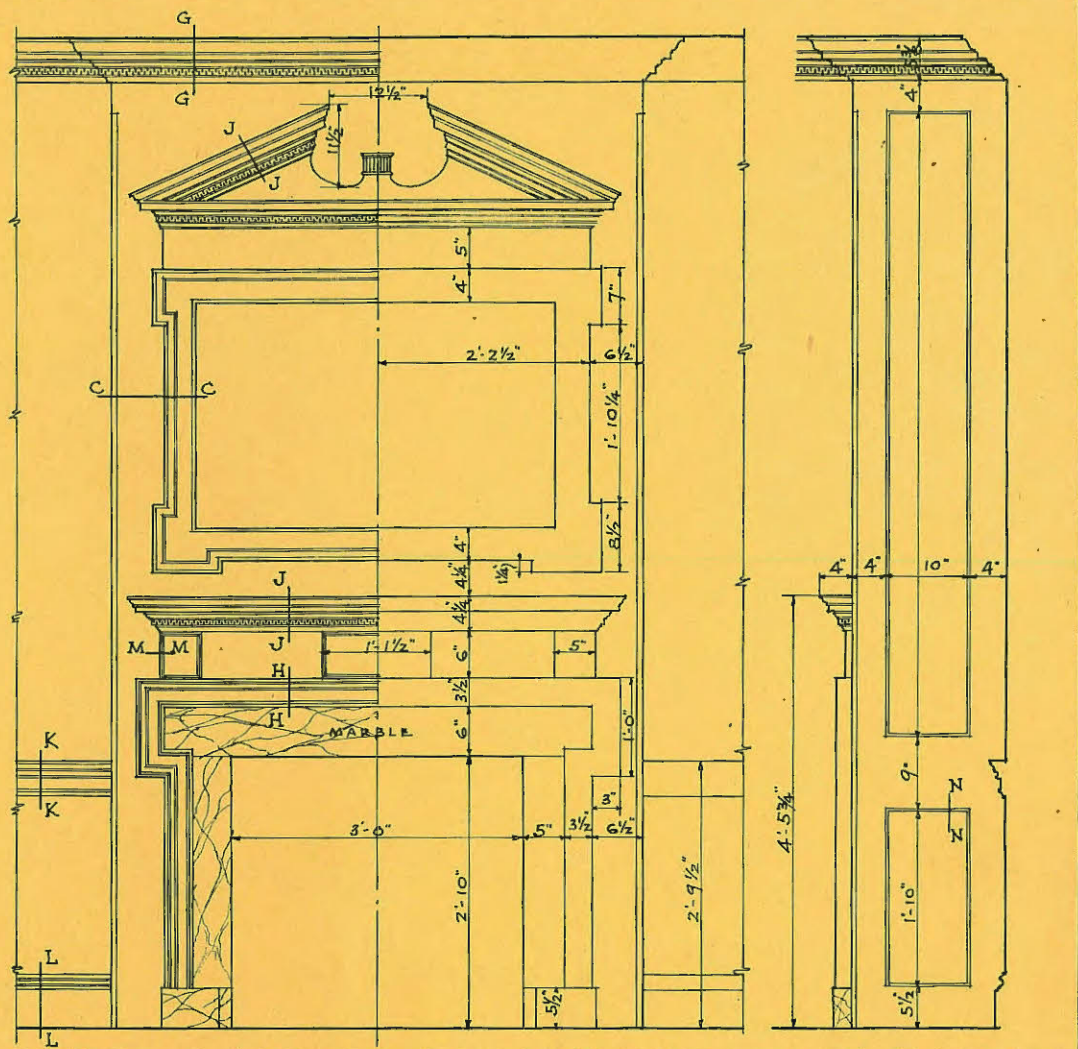
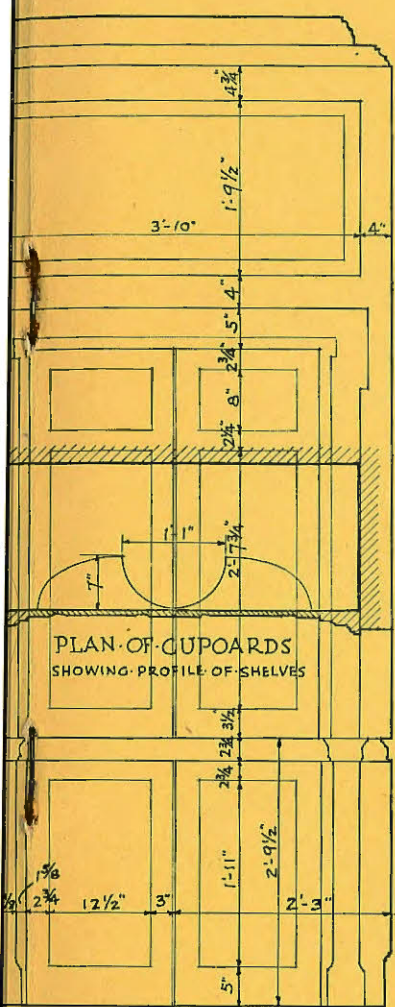


ELEVATION OF DINING ROOM WALL
SCALE 1/2" = 1'-0"



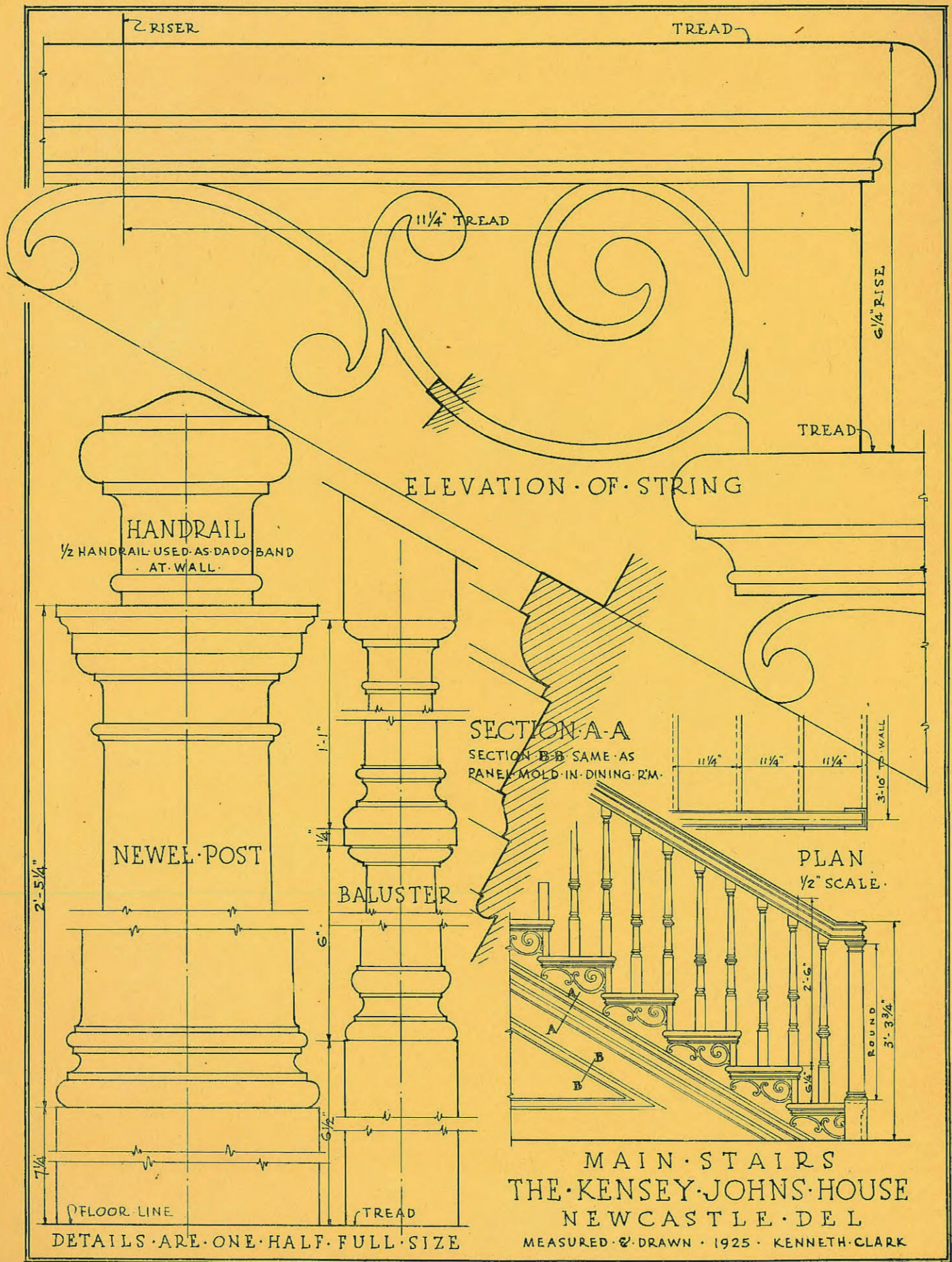
DINING ROOM DETAILS

These Drawings are reproduced



· THE ·
KENSEY · JOHNS · HOUSE
 · NEWCASTLE · DEL ·
 MEASURED AND DRAWN 1925 KENNETH · CLARK

duced exactly at the scale marked

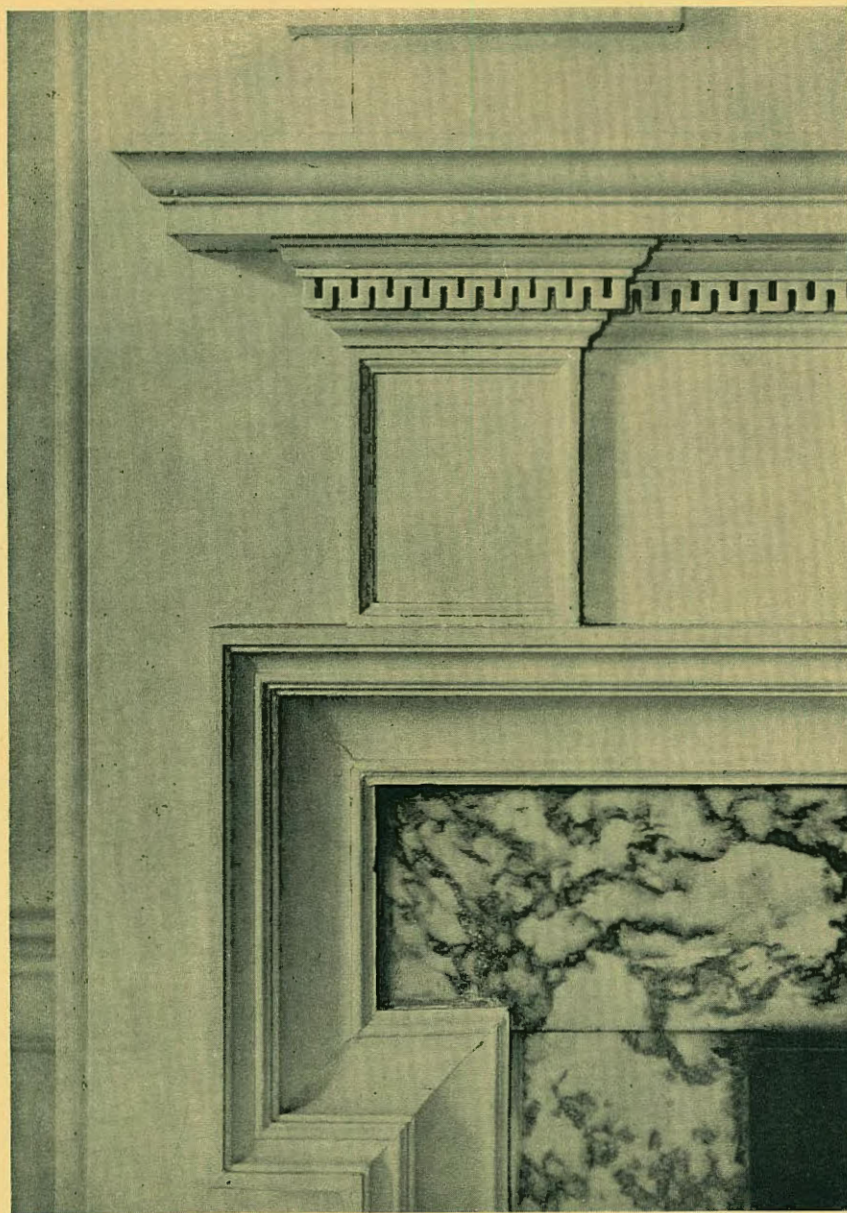


Drawing reproduced exactly at the scale marked



LIVING ROOM MANTEL—THE KENSEY JOHNS HOUSE, NEW CASTLE, DELAWARE

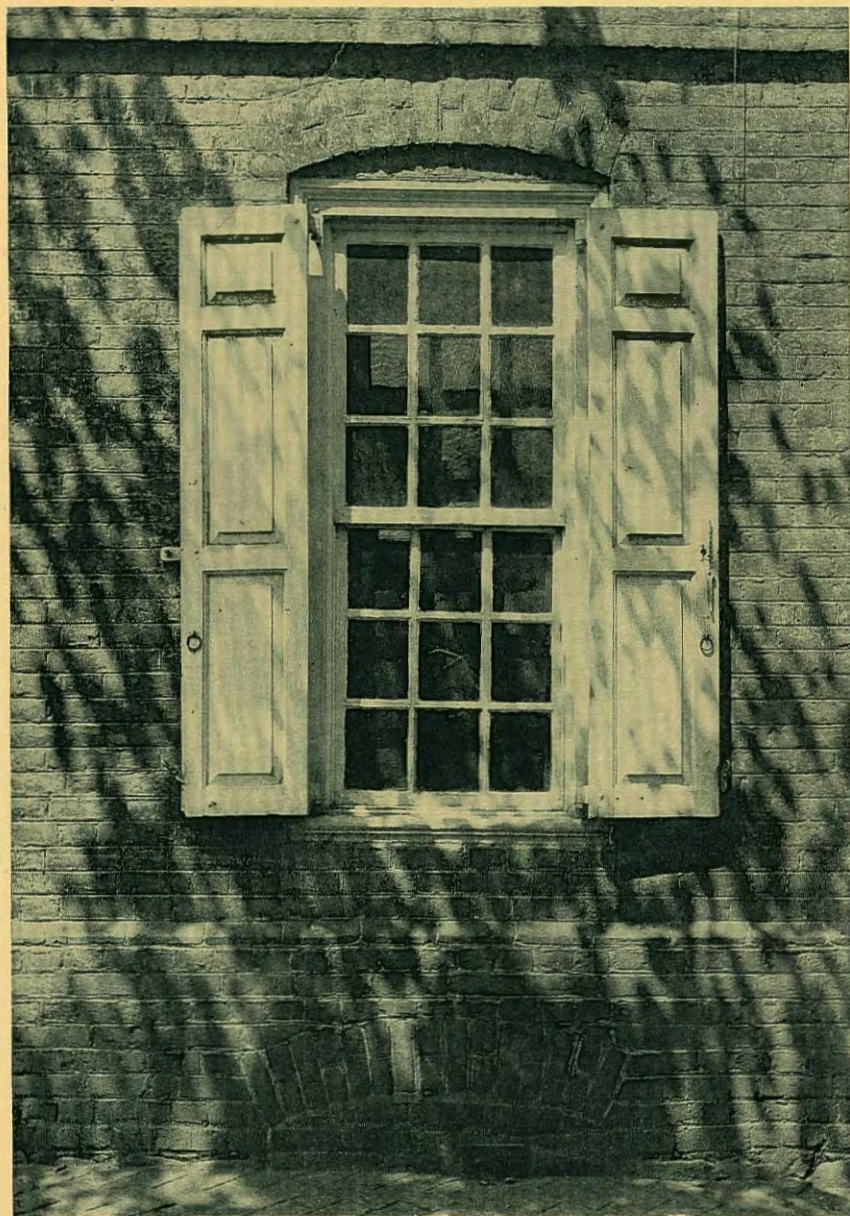
(See measured drawing, pages 12-13)



DETAIL OF LIVING ROOM MANTEL (*See measured drawing, pages 12 and 13*)

MAIN STAIRS (*See measured drawing, page 14*)

THE KENSEY JOHNS HOUSE (NUMBER 2 ORANGE STREET), NEW CASTLE, DELAWARE

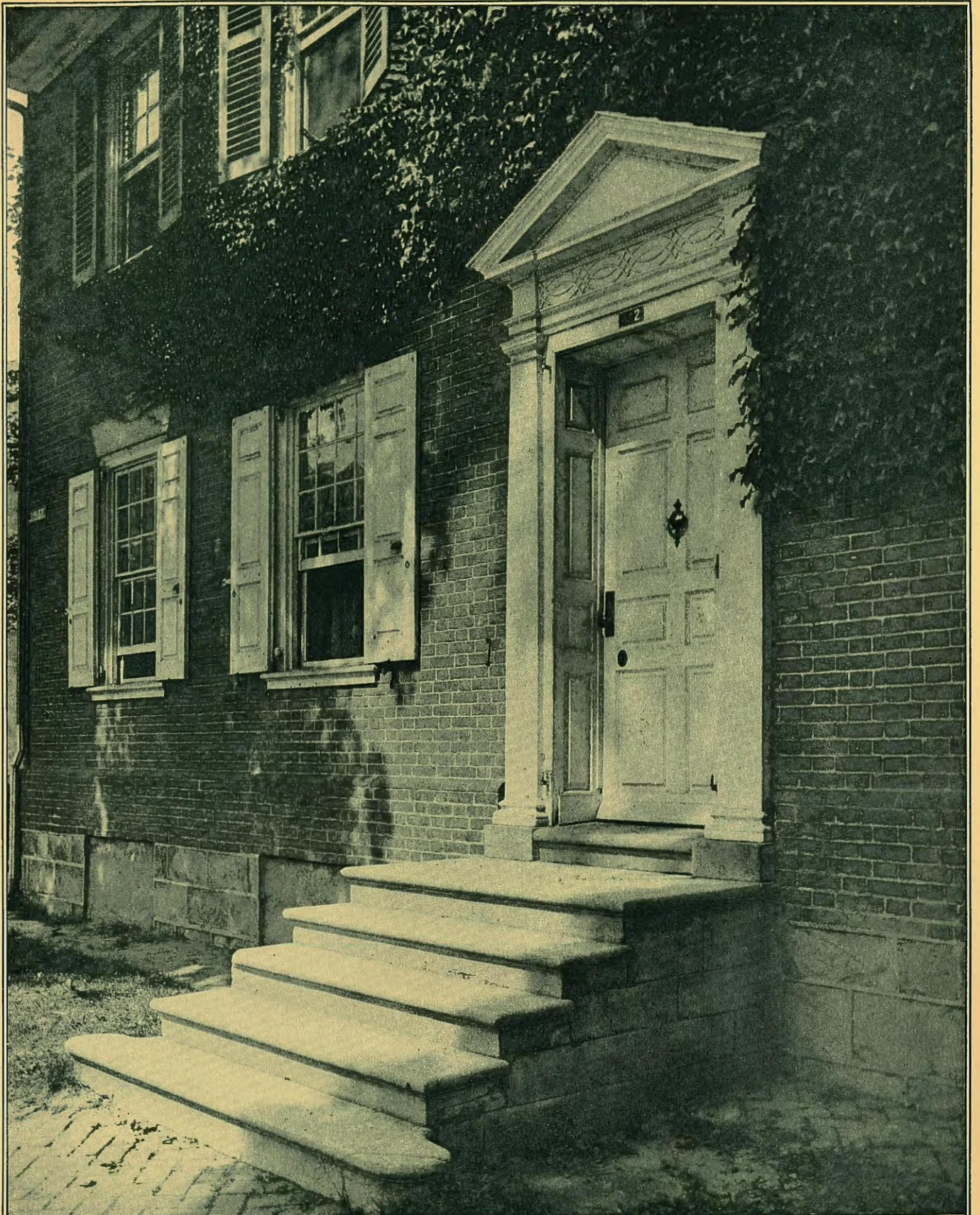


WINDOW DETAIL—AMSTEL HOUSE (1730)



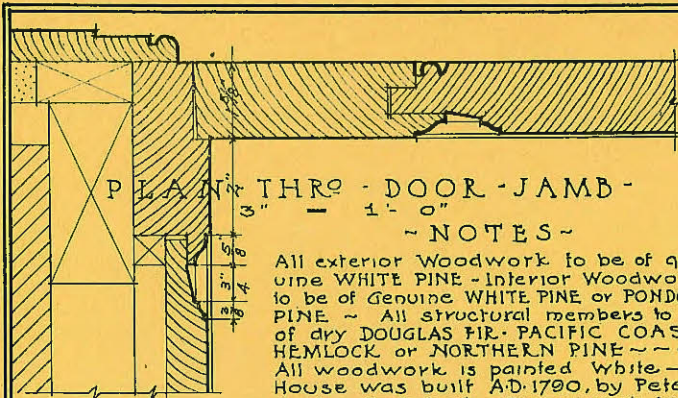
WINDOW DETAIL—KENSEY JOHNS HOUSE (1790)

NEW CASTLE, DELAWARE—WINDOW DETAILS

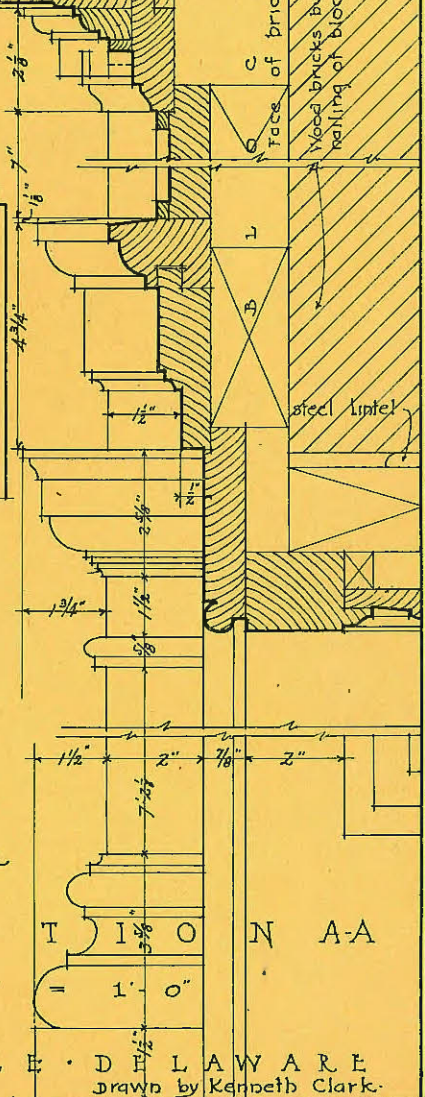
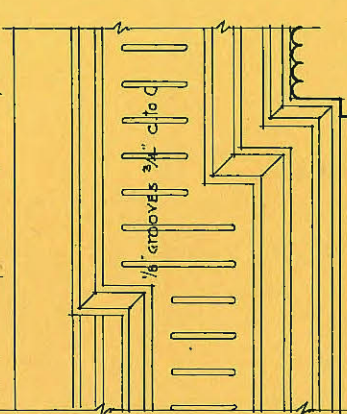
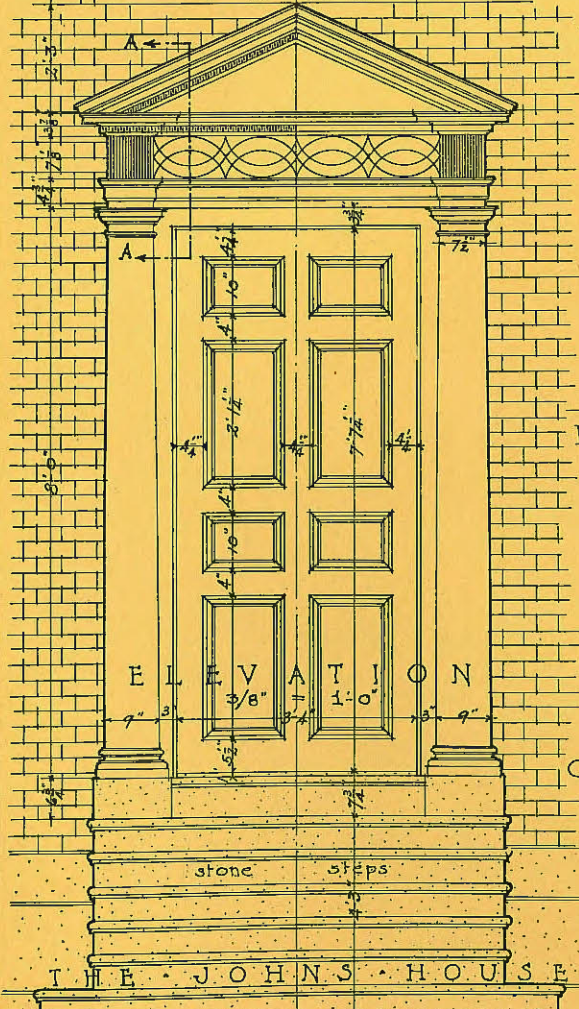
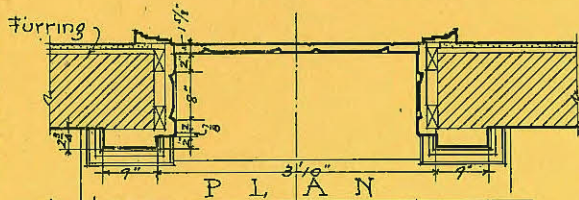
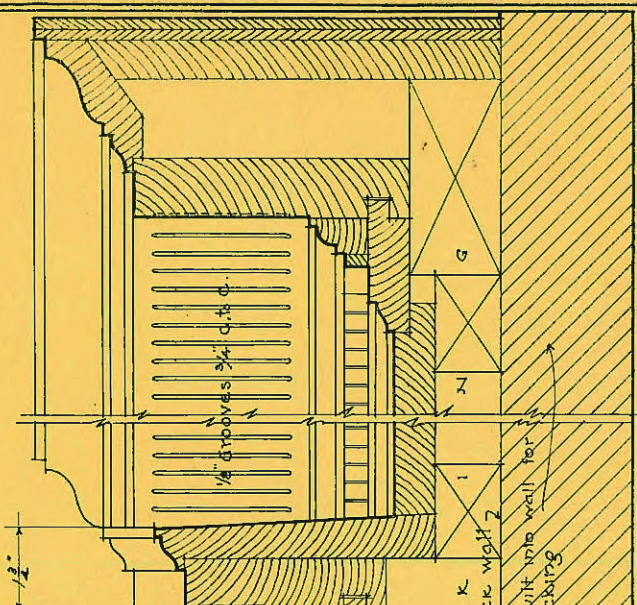


• WOOD • CONSTRUCTION • DETAILS •
SUGGESTED BY
WEYERHAEUSER • FOREST • PRODUCTS
SAINT • PAUL • MINNESOTA





- NOTES -
 All exterior Woodwork to be of genuine WHITE PINE - Interior Woodwork to be of Genuine WHITE PINE or PONDOSA PINE - All structural members to be of dry DOUGLAS FIR - PACIFIC COAST HEMLOCK or NORTHERN PINE - All woodwork is painted White - House was built A.D. 1790, by Peter Justis Architect - Brickwork laid Flemish Bond with 1/4" white mortar joints slightly raked - Bricks, dark red - According to the records, the builders were G. Vansandt & J. Baldwin



THE JOHN'S HOUSE - NEW CASTLE - DELAWARE
 Drawn by Kenneth Clark.



WOOD CONSTRUCTION DETAILS
 SUGGESTED BY
WEYERHAEUSER FOREST PRODUCTS
 SAINT PAUL MINNESOTA

